



San Bruno Park Assessment

City Council Meeting

Tuesday, March 25, 2025

Agenda

- I. Introduction
- II. Existing Conditions
- III. Community Engagement
- IV. Key Directions
- V. Next Steps

Planning Process Overview

Planning Purpose and Process

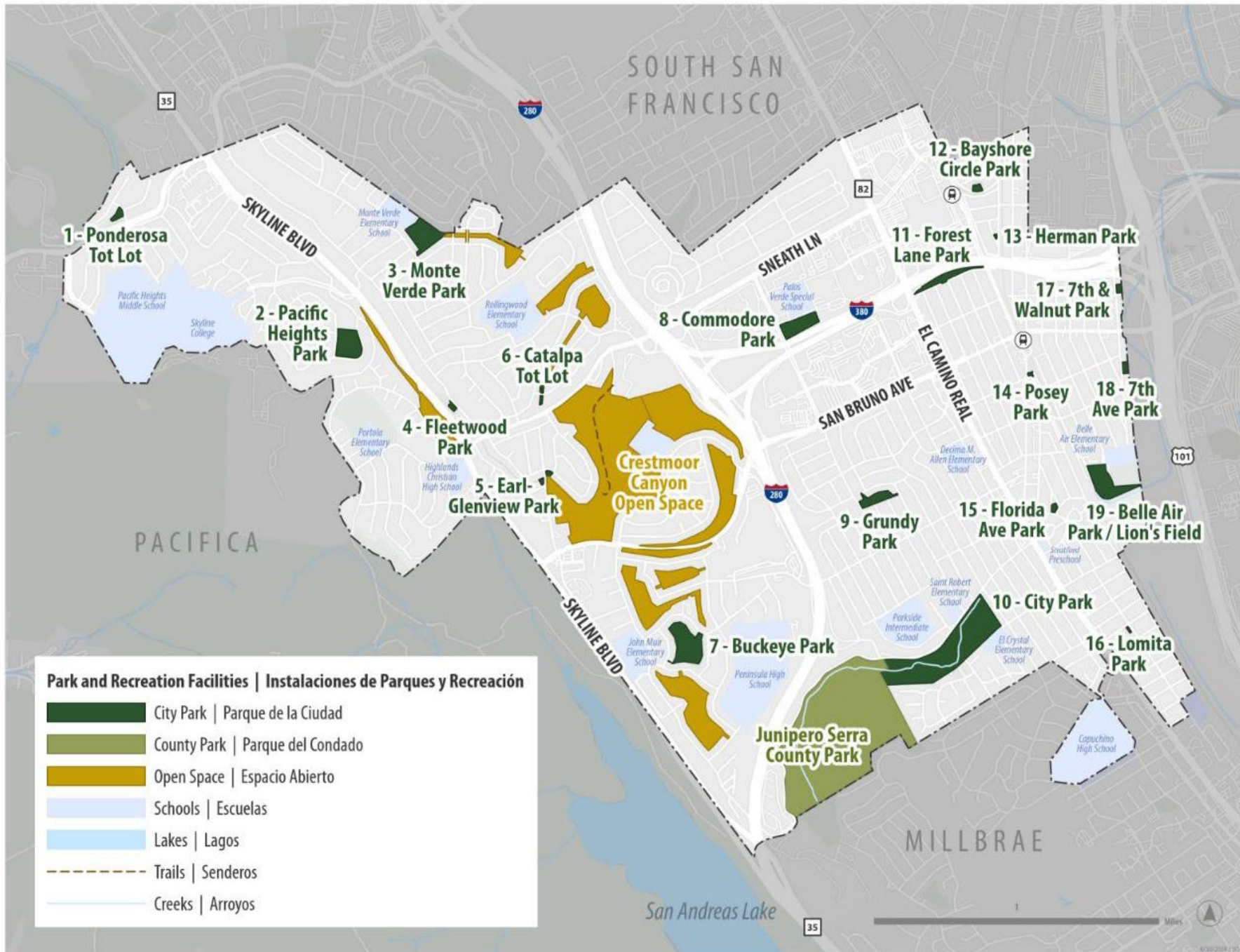


Advisory Direction



Date	Meeting Topic
November 2024	Parks & Recreation Commission: Process Overview and Conditions Assessment
March 2025	City Council: Community Engagement and Key Directions

Existing Park System



Park and Recreation Facilities | Instalaciones de Parques y Recreación

- City Park | Parque de la Ciudad
- County Park | Parque del Condado
- Open Space | Espacio Abierto
- Schools | Escuelas
- Lakes | Lagos
- Trails | Senderos
- Creeks | Arroyos

Existing Park Inventory

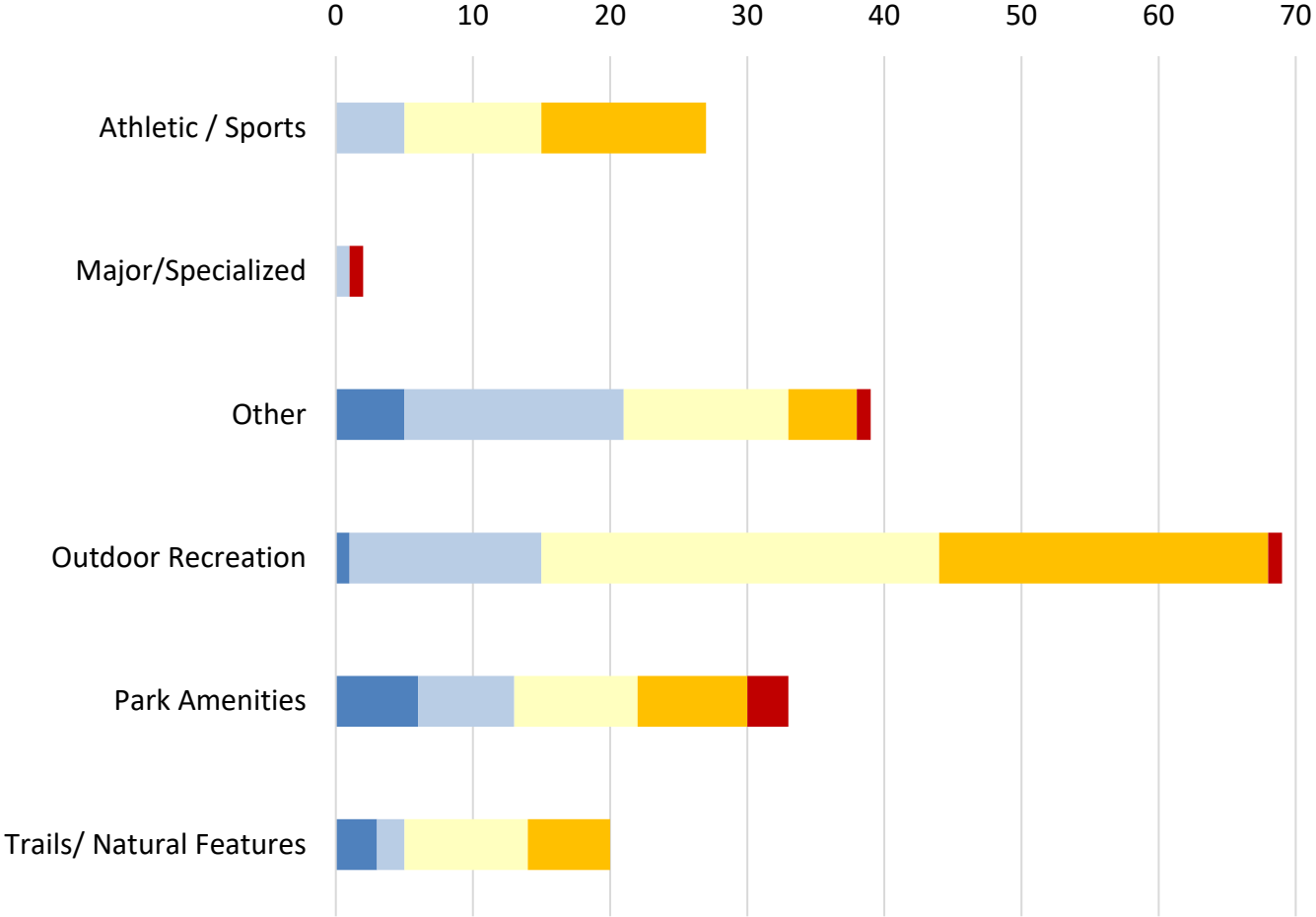
Name	Acreage	Classification
City Park	28.9	Community Park
Bayshore Circle Park	0.5	Neighborhood Park
Belle Air Park/Lions Field	3	
Buckeye Park	7.3	
Commodore Park	4	
Fleetwood Park	0.3	
Florida Avenue Park	0.4	
Forest Lane Park	2.5	
Grundy Park	2.4	
Monte Verde Park	5.6	
Pacific Heights Park	5	
Ponderosa Tot Lot	0.7	
7th Avenue Park	0.5	
7th & Walnut Park	0.4	

Name	Acreage	Classification
Catalpa Tot Lot	0.2	Pocket Park
Earl-Glenview Park	0.4	
Herman Park	0.1	
Lomita Park	0.1	
Posy Park	0.1	
Crestmoor Canyon Open Space	76.4	Open Space
109.9		Total

Condition Assessment

Asset Condition Assessment

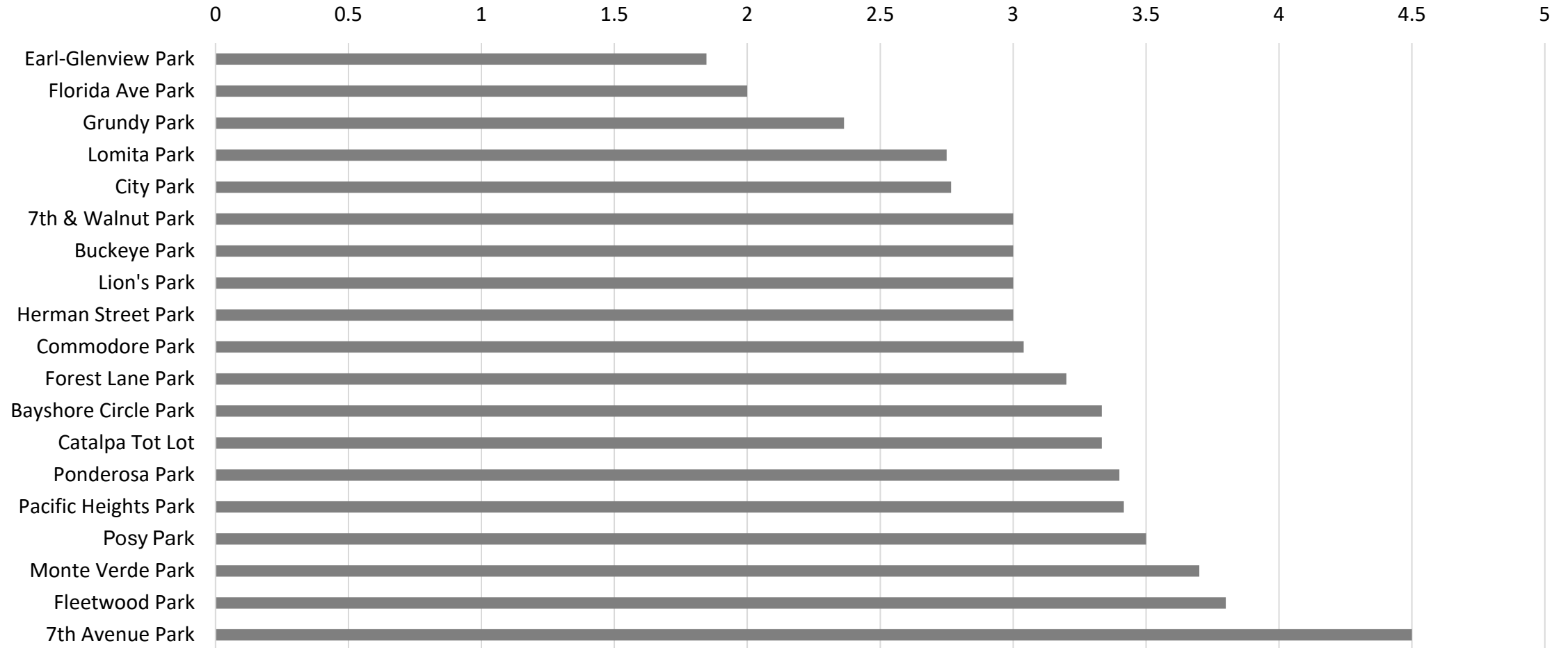
Condition Summary by Asset Type



1 - Excellent 2 - Good 3 - Fair 4 - Poor 5 - Non-Functional

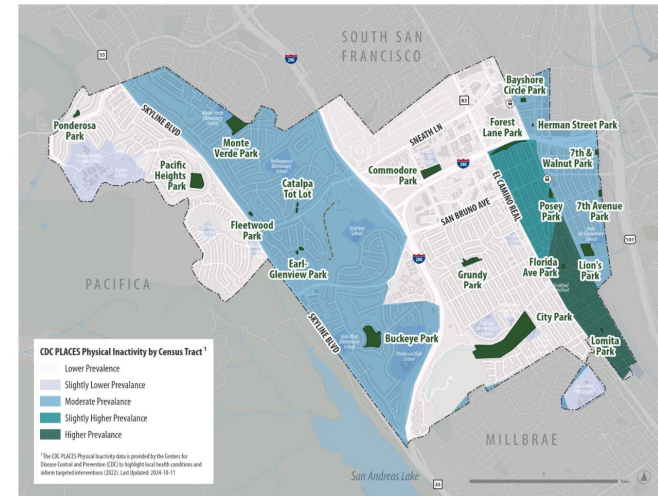
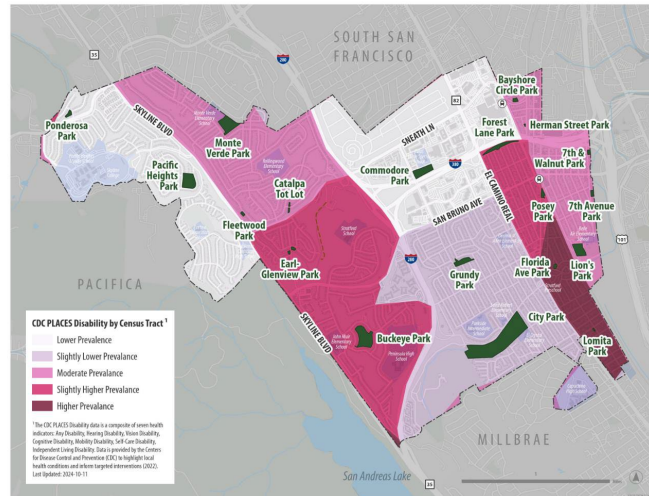
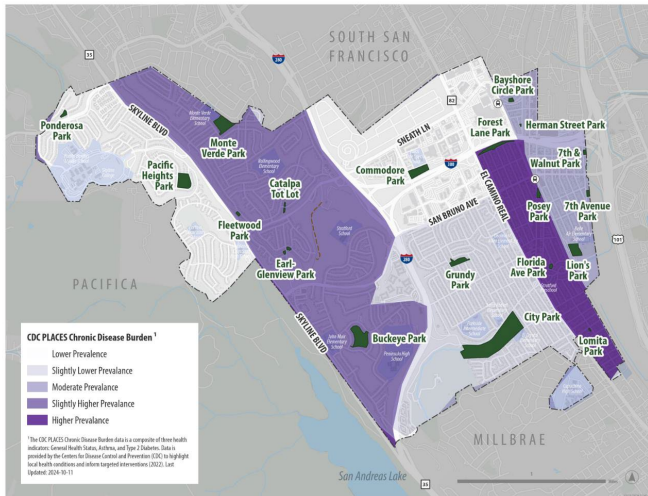
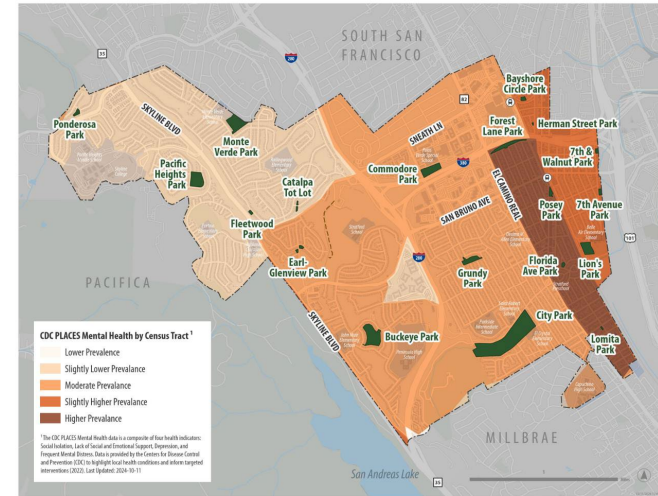
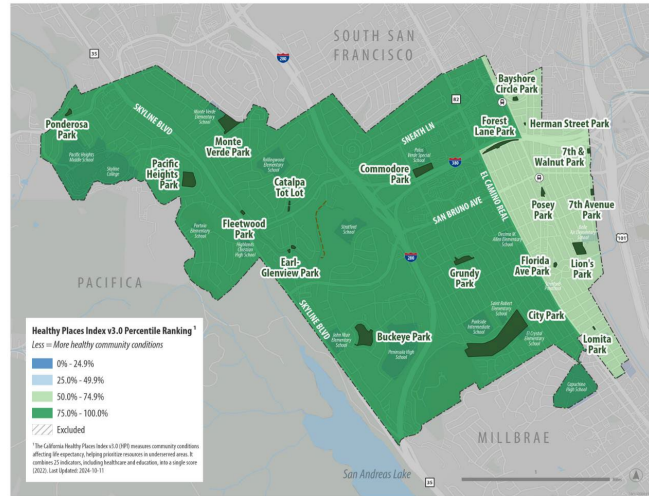
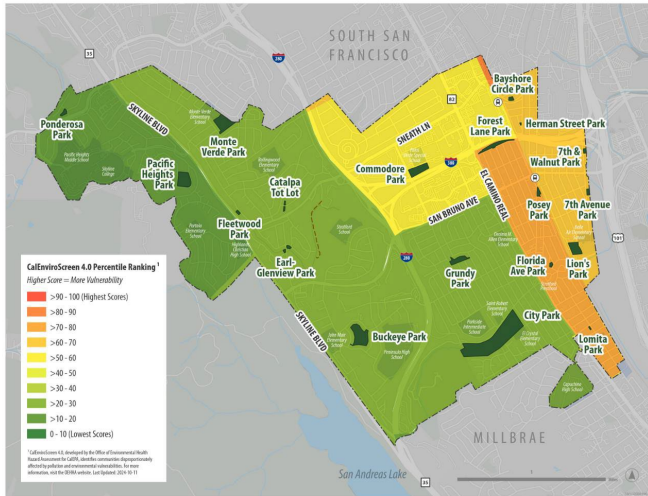
Park Condition Assessment

Average Asset Condition Score by Park

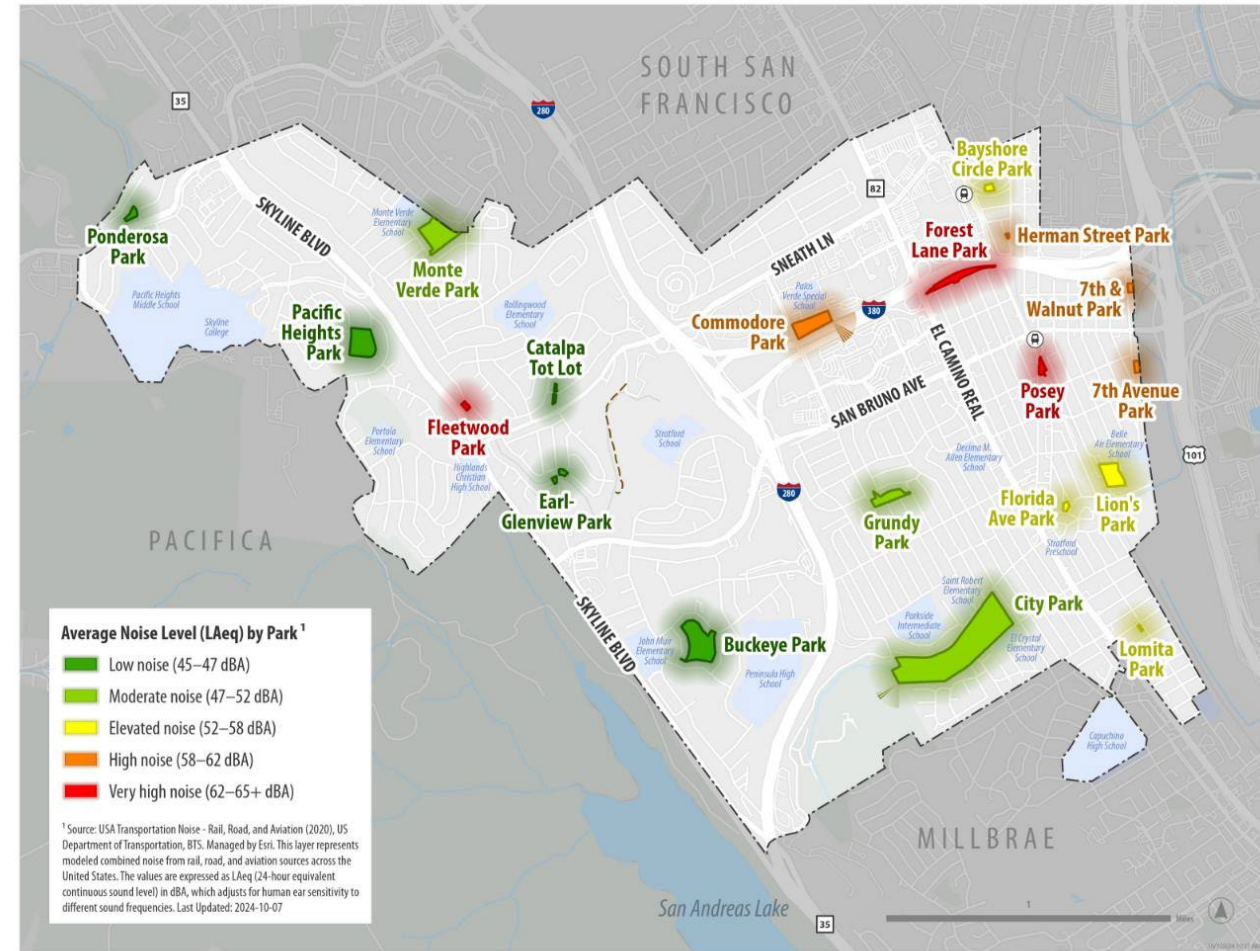
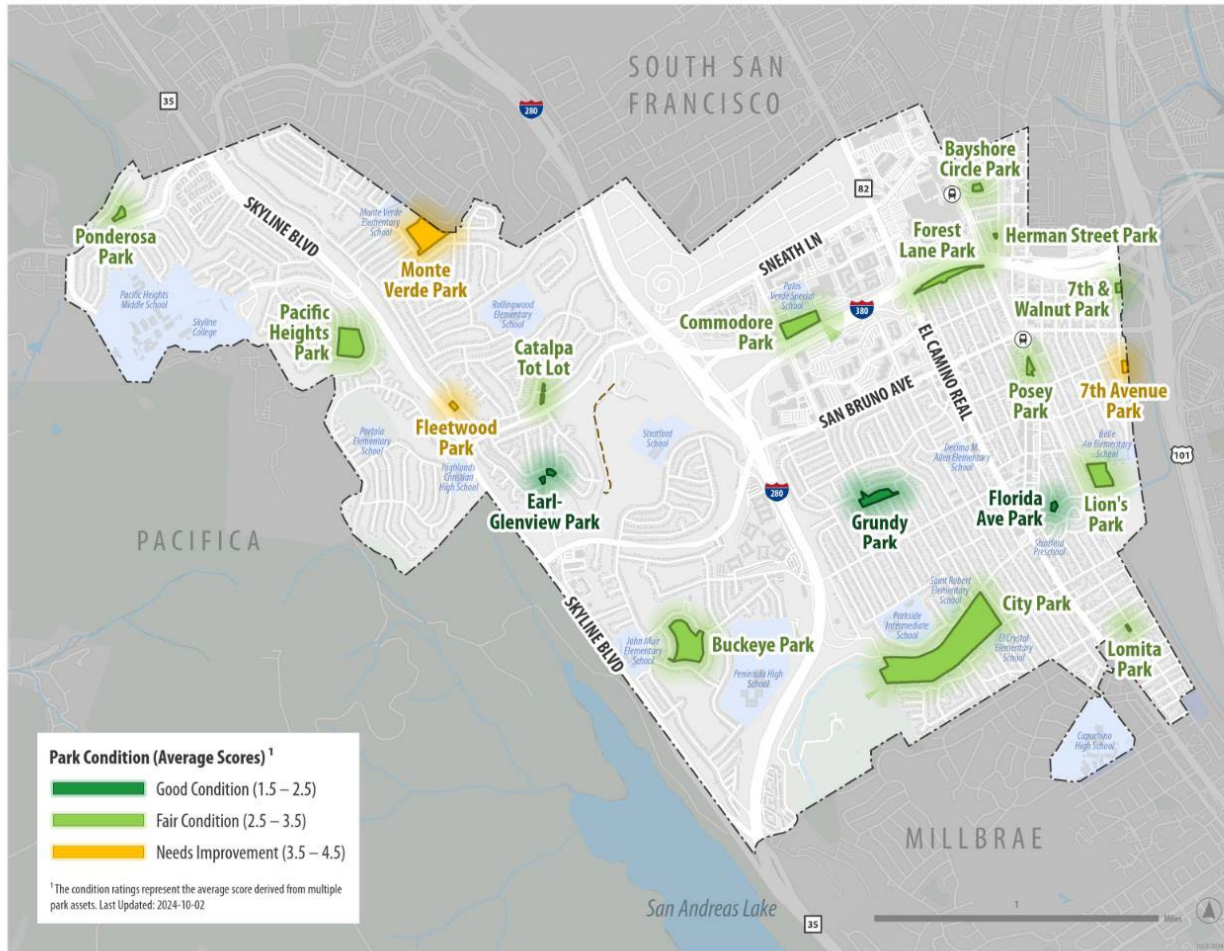


Mapping & Demographic Analysis

Socioeconomic Analysis

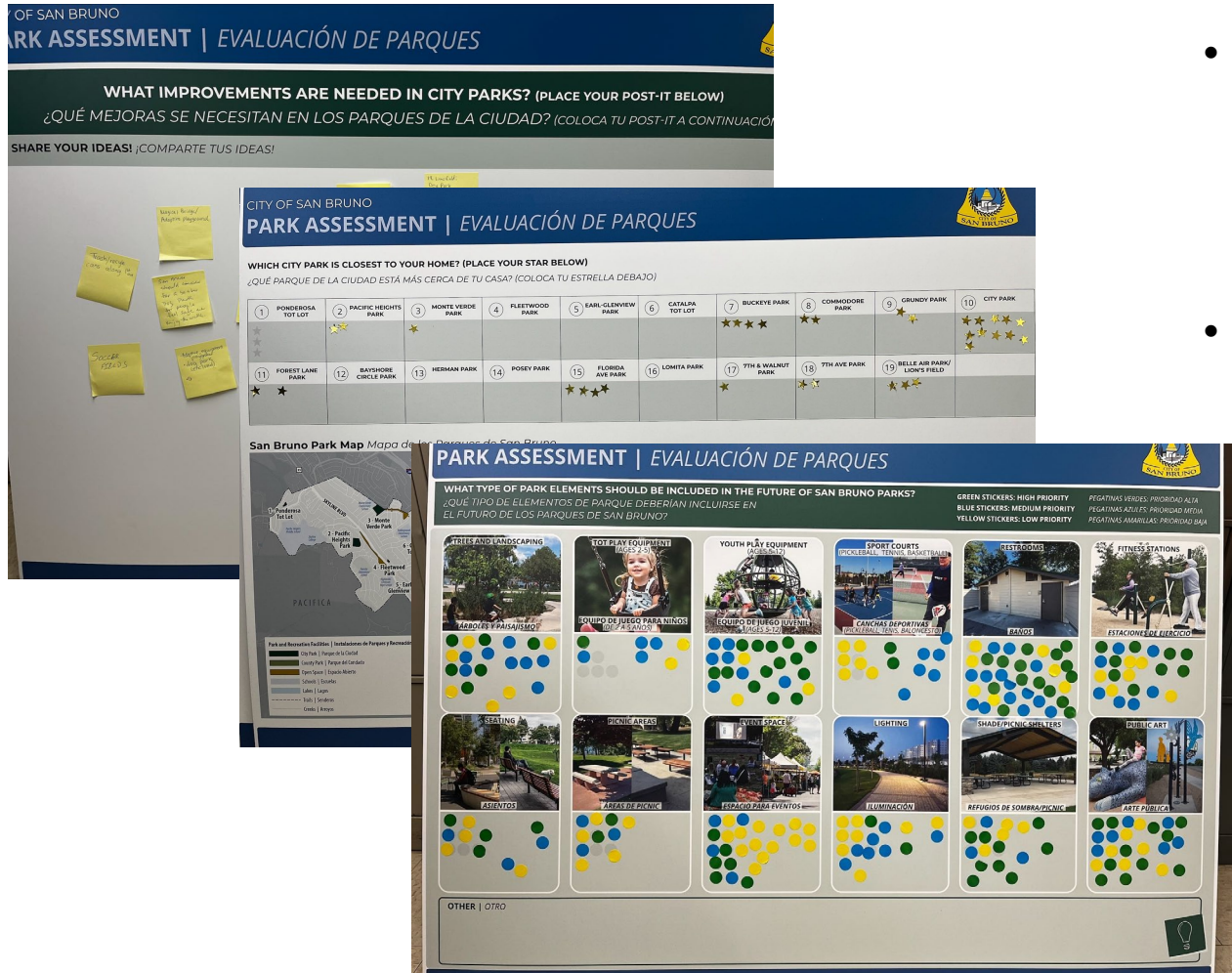


Park Condition Analysis



Community Engagement

Engagement Activities



- Pop-Up Events
 - Centennial Plaza Ribbon Cutting
 - Tree Lighting
- Online Community Survey
 - Winter 2025

Online Community Survey



1,113 total responses

90% indicated they are **residents of San Bruno**

79% are **frequent park users**

52% indicated they **have children in the household**

61% **walk to the park** they visit most frequently

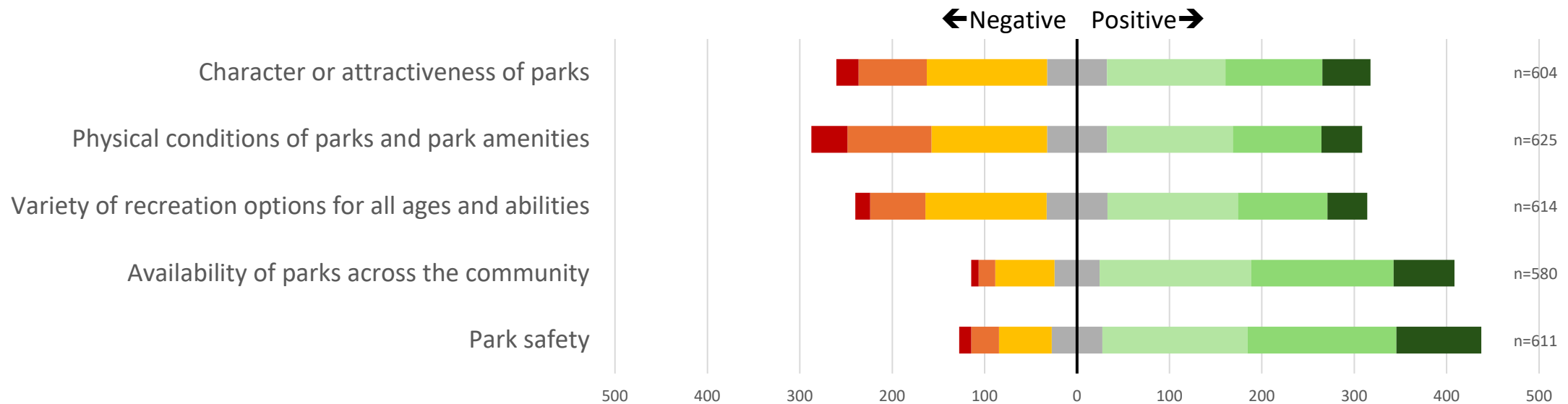
The respondents who indicated their race/ethnicity (a total of 728) reflect the diversity of San Bruno with **27% indicating Asian/Asian American** and **13% Hispanic/Latino**. While not a perfect match to recent census data, it is a sizable response.

Online Community Survey

- **Parks, recreation, and trails are important** to San Bruno's quality of life.
- Respondents **visit parks frequently** (79% more than once a week) but report a lack of interesting things to do there.
 - The main motivations to visit parks include **exercise** (58%), **nature** (52%), and **taking children to play** (49%).
 - Respondents want more **walking/biking** (51%), **play** (48%), **relaxing** (42%) and **gatherings** (37%).
- There is strong interest in **park and recreation basics**- better play structures, comfort amenities, support for sports and fitness, and social gathering.
- There is strong interest in reinvesting in San Bruno parks, with **replacement of old and worn features** (73%) as the most important item. This desire was also reflected in many open-ended responses.
 - Responses were united about NOT removing recreation features at existing parks, but rather wanting to see them replaced or upgraded.
- Despite City Park being the most frequently visited park (59%), respondents want to see **investments spread out, including smaller improvements throughout the city** (64%).

Online Community Survey

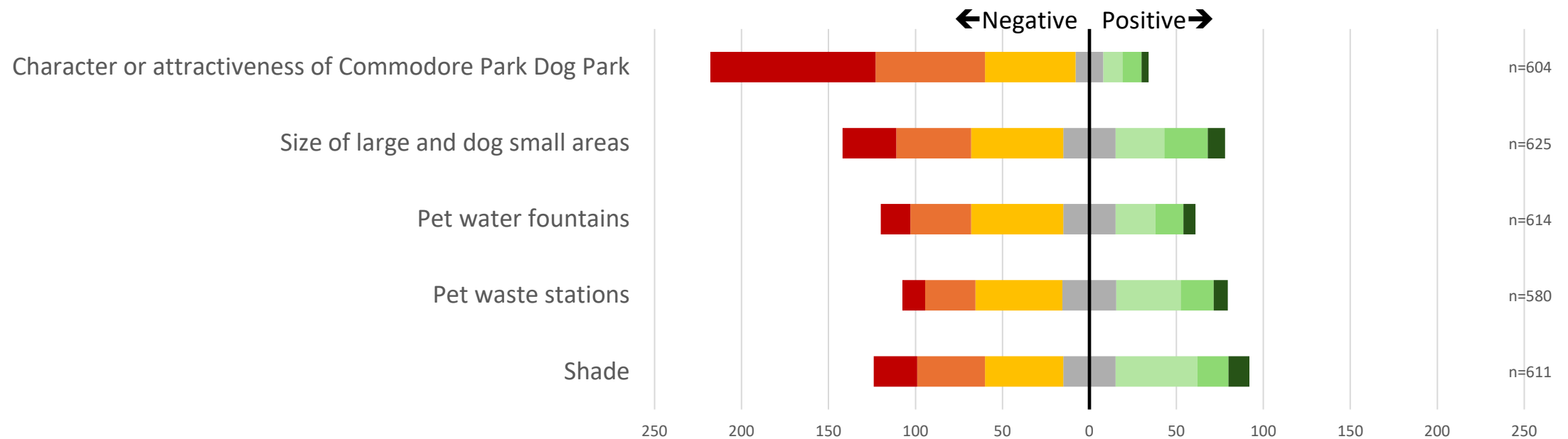
How would you rate parks and recreation amenities?



Online Community Survey

- 48% of respondents have visited the Commodore Park dog park. This group expressed interest in **additional and improved dog parks**, and **negative opinion of the character and size of the existing dog park** at Commodore Park.

How would you rate the quality of the dog park amenities at Commodore Park?



Online Community Survey

The City makes choices every year about how to invest funding in renovating, enhancing, maintaining, or activating the parks and recreation system. Which of the following are most important? (Choose up to three)

Value	Percent	Count
Repair or replace old and worn park amenities	73%	552
Add a greater variety of features in parks	40%	298
Increase routine maintenance (cleanliness, mowing, litter pickup)	37%	280
Improve trails and paths in parks	32%	241
Improve or build more sports fields and courts	29%	216
Host more community events	22%	169
Other, please specify:	11%	80
None of the above	2%	13

Key Directions

Key Directions



- 1. Repair and Replace**
- 2. Greater Variety of Features in Parks**
- 3. Enhanced Trails, Pathways, and Natural Processes**

Key Directions

- **Playground replacements**
- **Improved athletics facilities**
 - Tennis courts (City Park)
 - Basketball courts
 - Baseball and softball fields
 - Belle Air/Lions Park multiuse field
- **Improved ADA accessibility**
 - Entries and circulation
 - Picnic/gathering areas
 - Play areas

1. Repair and Replace

2. Greater Variety of Features in Parks

3. Enhanced Trails, Pathways, and Natural Processes

Key Directions

- **Greater diversity in recreation facilities**
 - Nature play
 - Challenge elements (climbers, fitness stations etc.)
 - Art (both functional and aesthetic)
- **Dog park and/or off-leash opportunities**
- **Added and improved park amenities**
 - Bike racks
 - Pet waste stations
 - Drinking fountains

1. Repair and Replace

2. Greater Variety of Features in Parks

3. Enhanced Trails, Pathways, and Natural Processes

Key Directions

- **Support for natural processes**
- **Support for trails and access to nature within parks**
- **Green infrastructure for buffering – noise, particle pollution, etc.**

1. Repair and Replace

2. Greater Variety of Features in Parks

3. Enhanced Trails, Pathways, and Natural Processes

Questions and Discussion

Next Steps

Next Steps

- I. Preliminary Project List and Prioritization
- II. Online Prioritization Activity
- III. Priority Project List with Cost Estimates