

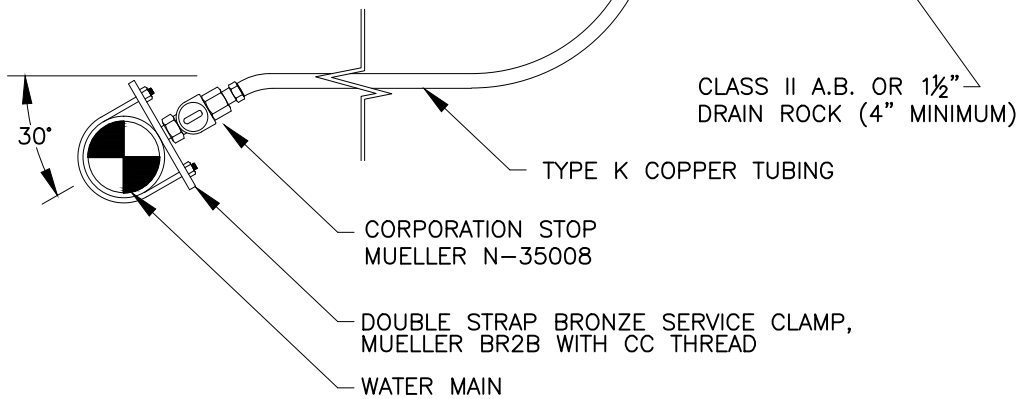
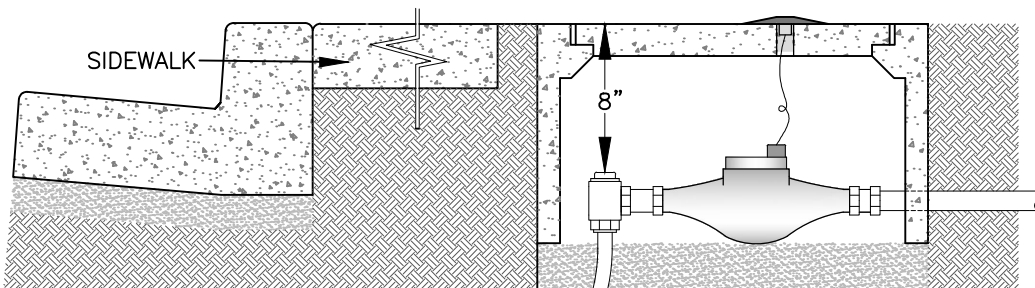
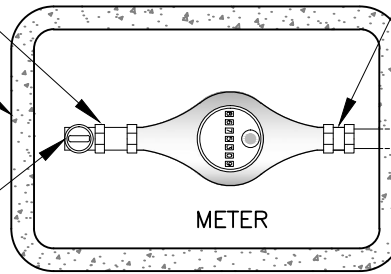
FOR NEW 1" SERVICE TO EXISTING 3/4" METER USE MUELLER H-10889 METER BUSHING

CHRISTY BOX, B12 WITH "WATER" IMPRINTED ON THE LID, B12P TO BE USED WITH 3/4" METER
CHRISTY BOX, B16 WITH "WATER" IMPRINTED ON THE LID, B16P TO BE USED WITH 1" METER.

ANGLE STOP, MUELLER B-24258

MUELLER H-10871 INSULATED STRAIGHT METER COUPLING

DOMESTIC SERVICE



NOTES

1. ALL CORP STOPS, ANGLE METER STOPS, COUPLINGS AND CONNECTIONS SHALL BE LEAD FREE MUELLER 110 COMPRESSION TYPE FITTINGS OR APPROVED EQUIVALENT BY CITY.
2. METER INSTALLATION MAY REQUIRE CITY ISSUED, ELECTRONIC RADIO READ UNIT, AT CITY'S DIRECTION.
3. WATER METER SHALL BE LOCATED WITHIN THE PUBLIC RIGHT-OF-WAY AND, WHEN POSSIBLE, OUTSIDE OF THE SIDEWALK AND WITHIN LANDSCAPED AREAS, UNLESS OTHERWISE APPROVED BY THE CITY ENGINEER.



City of San Bruno
Standard Detail

**1" RESIDENTIAL
WATER SERVICE**

DATE: **MAR. 2020**

DRAWN BY: **JMH**

CITY ENGINEER:

Hae Won Ritchie

W-01

APPROVED BY:

HAE WON RITCHIE

R.C.E. C69532

DETAIL NO: